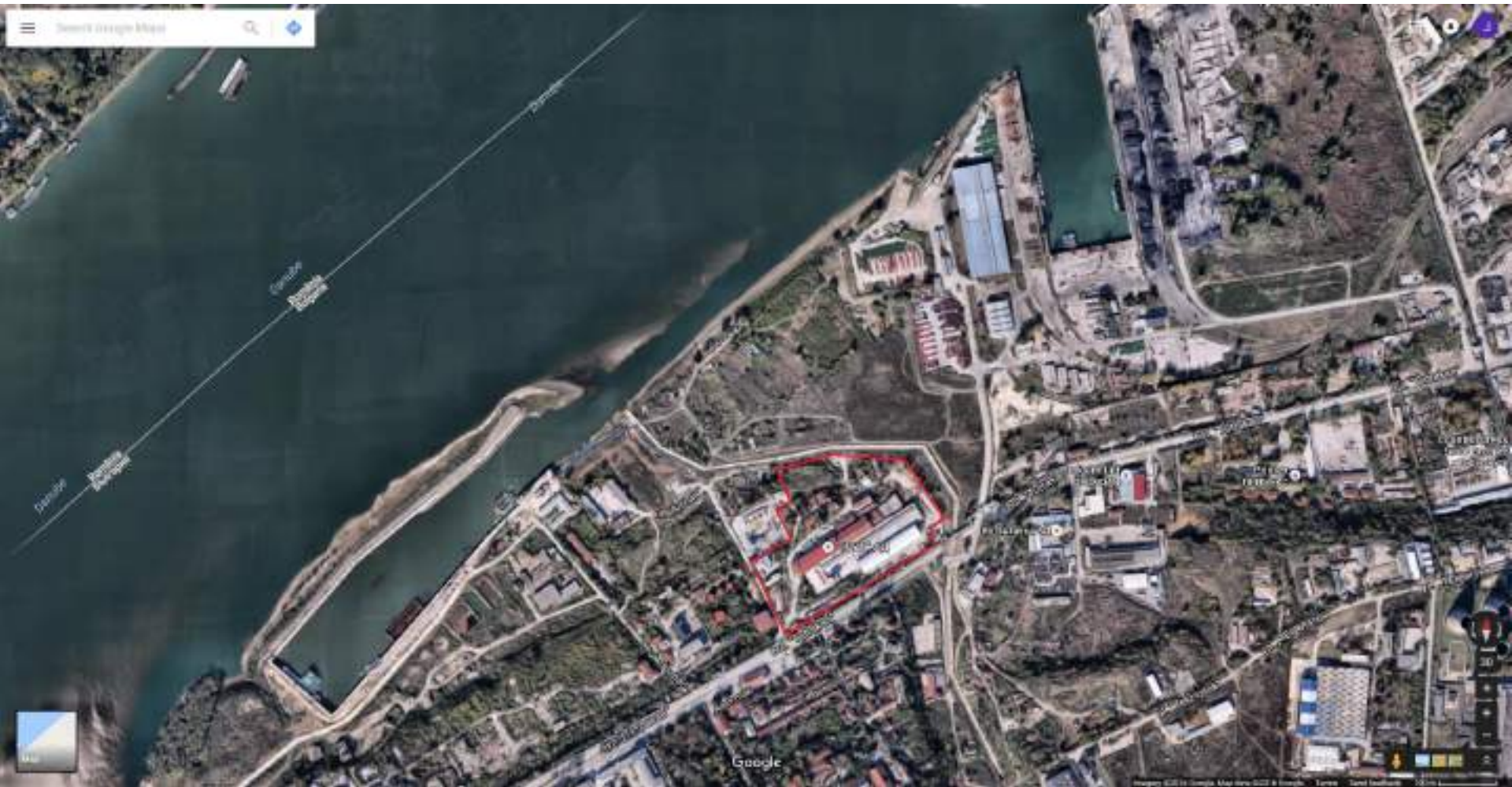




What we offer *to potential investors*



TRUD Jsc. (Excellent location)



Located in North-Eastern Bulgaria:

- ✓ 700 meters to Port of Ruse (river port)
- ✓ 2.3 km. do Danube Bridge (Romanian border)
- ✓ 2.8 km. to Duty Free Zone Ruse
- ✓ 4.5 km. to the city center of Ruse
- ✓ 68 km. to the city center of Bucharest (capital of Romania)
- ✓ 202 km. to Port of Varna (sea port)
- ✓ 315 km. to the city center of Sofia (capital of Bulgaria)



TRUD Jsc.

(Excellent infrastructure)



Total area – 61 517 m², of which:

- ✓ Production area: 1 -main production workshop (12 430 m²), 2 -tools workshop (884 m²); 3 -wood workshop (97m²)
- ✓ Covered warehouses – total area 6 500 m²
- ✓ Administration building – fully renovated in 2008 (504 m²)
- ✓ Production facilities – 1-security (139 m²), 2-parking lot (750 m²), 3-electrical substation (268 m²), 4-garage (640 m²), 5-canteen (175 m²), 6-Fuels depot (82 m²)
- ✓ L1 - Railroad loading/unloading (with crane), L2 – Truck loading/unloading (with crane), S – Scales for trucks

TRUD Jsc.

(Main equipment and machinery)

Full production line for refractories and clinker pavers, incl.:

- Hydraulic Press "SACMI PHR1000" (installed in 2006)
- Hydraulic Press "SACMI PHR500" (installed in 2006)
- New tunnel kiln "RIEDHAMMER" 60 m. (installed in 2013)
- Old tunnel kiln 182 m.
- Vehicle Weighing Scales /50 t./
- Bridge cranes (electric double girder) /12 t. & 8 t./
- Hammer mill, Ball mill, Jaw crusher
- Counterflow mixer
- Muller Mixer Machine 18 t.
- Hydraulic Presses 160 t.
- Vacuum extruder "φ450",
- Vacuum extruders "φ350"
- Vacuum extruders "φ200"
- Tunnel dryer (8 channels x 24m.)
- Transport vehicles, incl.: forklifts, freight and passenger vans, freight automobiles, front shovel loader, etc.

... and many, many more!



TRUD Jsc. (Recent photos)



TRUD Jsc.
(Recent photos)



TRUD Jsc. (Additional Assets)

- ❖ The company's main asset is its labor force. *Our team includes experienced and dedicated:* Engineers, Silicate technologists, Electricians, Mechanics, Laboratory specialists, Welders, Lathe operators, Fitters, Kiln operators, Hydraulic press operators, Forklift drivers, Traders, Accountants and many more.
- ❖ Quality control and certification.
Since 2003 the company is certified in accordance with the requirements of International standards ISO 9001:2015 & ISO 14001:2015.
- ❖ Well developed client and contracting partners network:
Over 100 Bulgarian companies & more than 40 European companies in Austria, Hungary, Italy, Romania, Greece, Serbia and Macedonia.
- ❖ Availability of grants
The company fully qualifies for funding through EU funds for Bulgarian enterprises.
- ❖ Over 120 years of history and traditions!

